



**CATHEDRAL PLAZA**

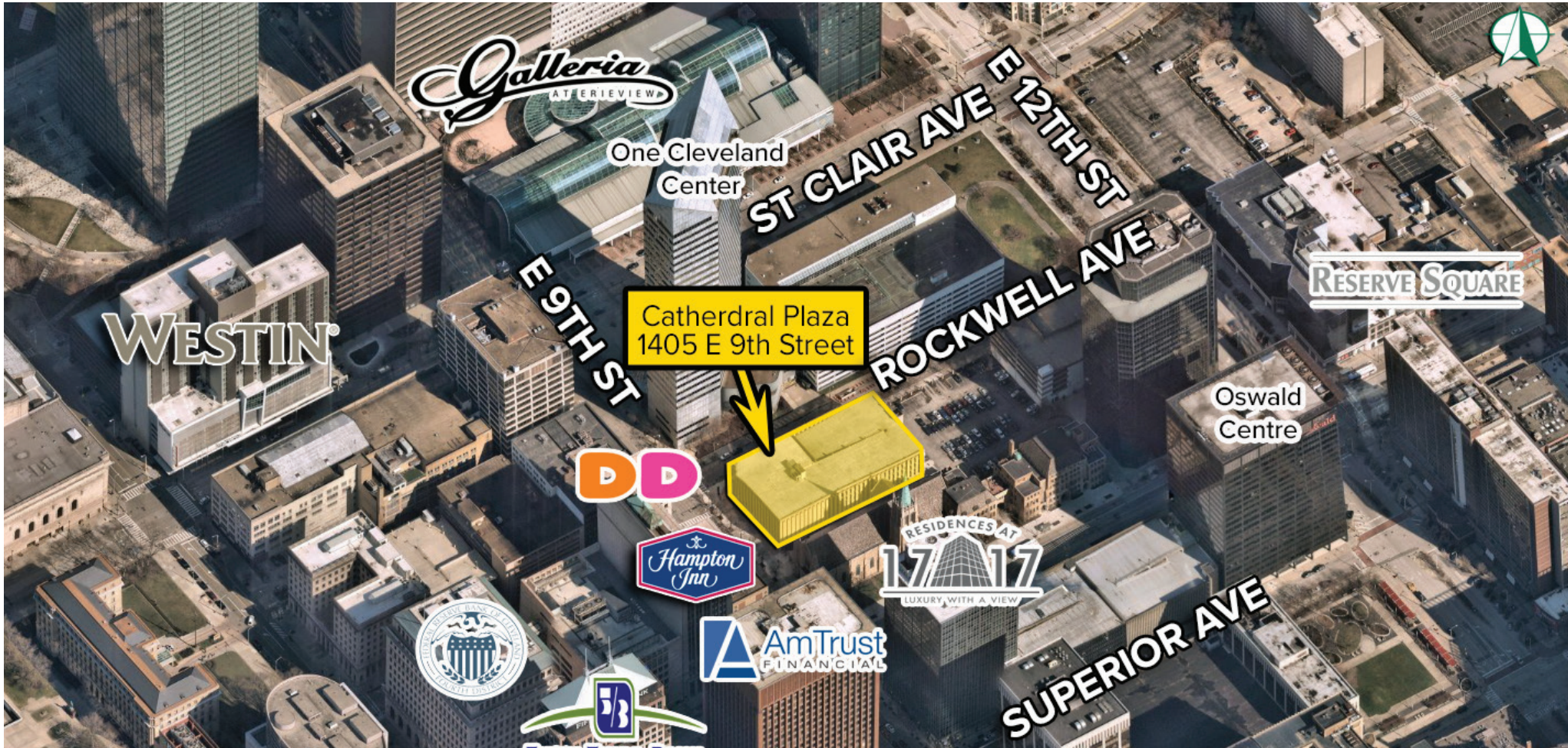
1405 E 9th St  
Cleveland, Ohio 44114



# FOR LEASE

# CATHEDRAL PLAZA

1405 E 9th Street | Cleveland, Ohio 44114



## HIGHLIGHTS

- ▶ 1,410 SF former end-cap restaurant available for lease
- ▶ Located in Cleveland's Downtown CBD
- ▶ Signalized intersection on the corner of East 9th Street & Rockwell Avenue
- ▶ Access to 6-story parking garage with 562 spaces
- ▶ Surrounded by major corporate office towers, hotels, and attractions
- ▶ [Click here](#) for Downtown Cleveland's 2023 Midyear Market Update

**AR** | **ANCHOR**  
RETAIL

**REALTY**  
**RESOURCES**  
MEMBER

**ALLISON GIOMUSO** | 216.342.2620 | [agiomuso@anchorretail.com](mailto:agiomuso@anchorretail.com)

**VICTOR KIRALLAH** | 216.342.2626 | [vkirallah@anchorretail.com](mailto:vkirallah@anchorretail.com)

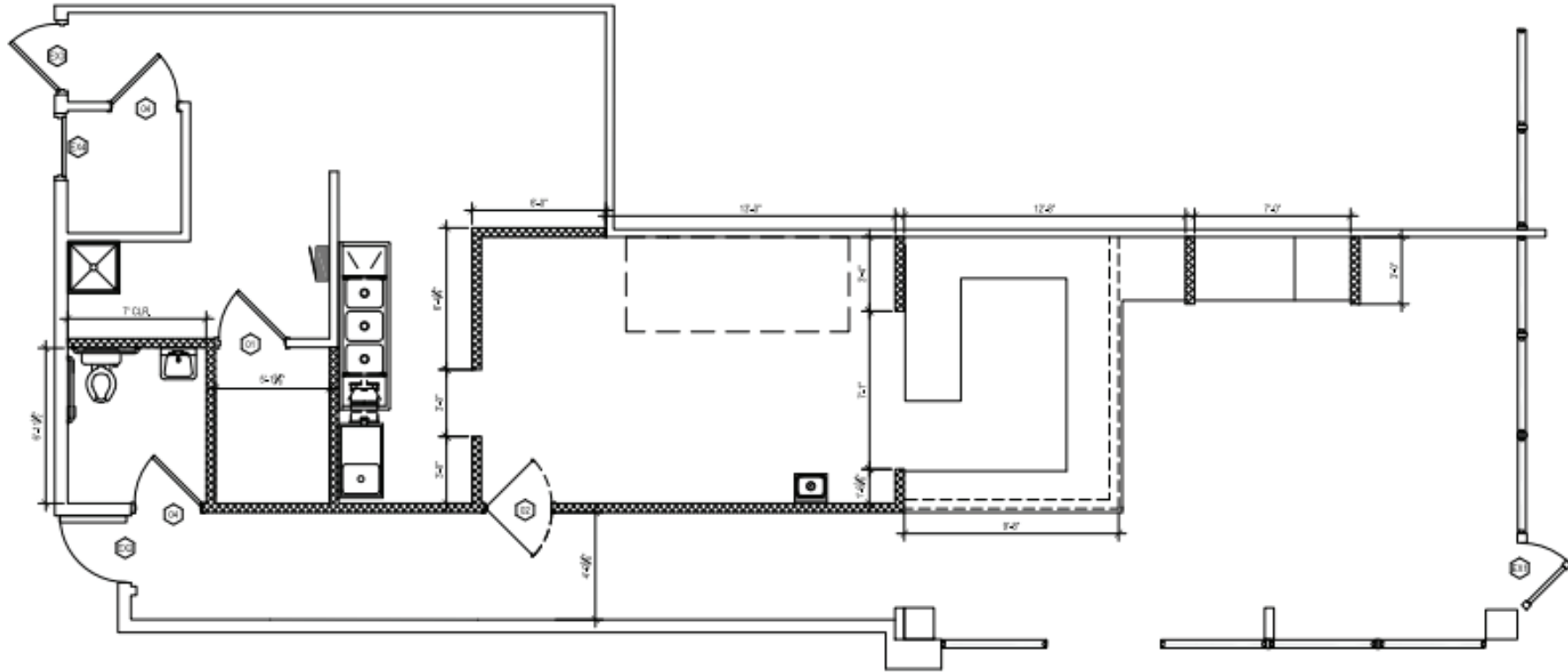
FOR LEASE

CATHEDRAL PLAZA

1405 E 9th Street | Cleveland, Ohio 44114

1405 East 9<sup>th</sup> Street, Cleveland, OH

Space Plan





# FOR LEASE

# CATHEDRAL PLAZA

1405 E 9th Street | Cleveland, Ohio 44114





FOR LEASE

# CATHEDRAL PLAZA

1405 E 9th Street | Cleveland, Ohio 44114





# FOR LEASE

# CATHEDRAL PLAZA

1405 E 9th Street | Cleveland, Ohio 44114

## 1405 East 9th Street

Downtown, Cleveland, 44114

Commute to **Downtown Cleveland** ✎

🚗 1 min 🚌 3 min 🚲 1 min 🚶 4 min [View Routes](#)

- 📍 Favorite
- 🗺 Map
- 🔍 Nearby Cleveland Apartments on Redfin

[More about 1405 East 9th Street](#) 🔗

Walk Score  
**97**

### Walker's Paradise

Daily errands do not require a car.

Transit Score  
**79**

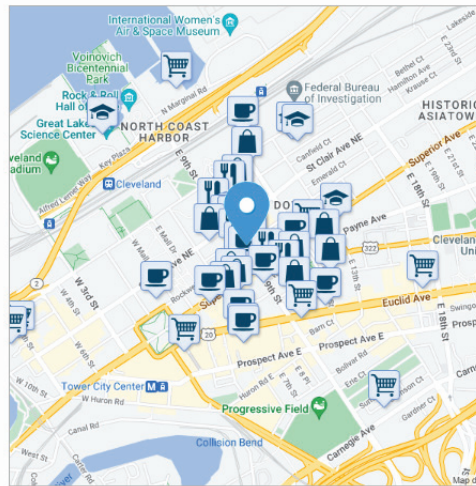
### Excellent Transit

Transit is convenient for most trips.

Bike Score  
**58**

### Bikeable

Some bike infrastructure.



[About your score](#)

[Add scores to your site](#)

Walk Score  
**89**

## Downtown is Very Walkable

Most errands can be accomplished on foot.



[United States](#) ▶ [Ohio](#) ▶ [Cleveland](#) ▶ **Downtown**



**ALLISON GIOMUSO** | 216.342.2620 | [agiomuso@anchorretail.com](mailto:agiomuso@anchorretail.com)

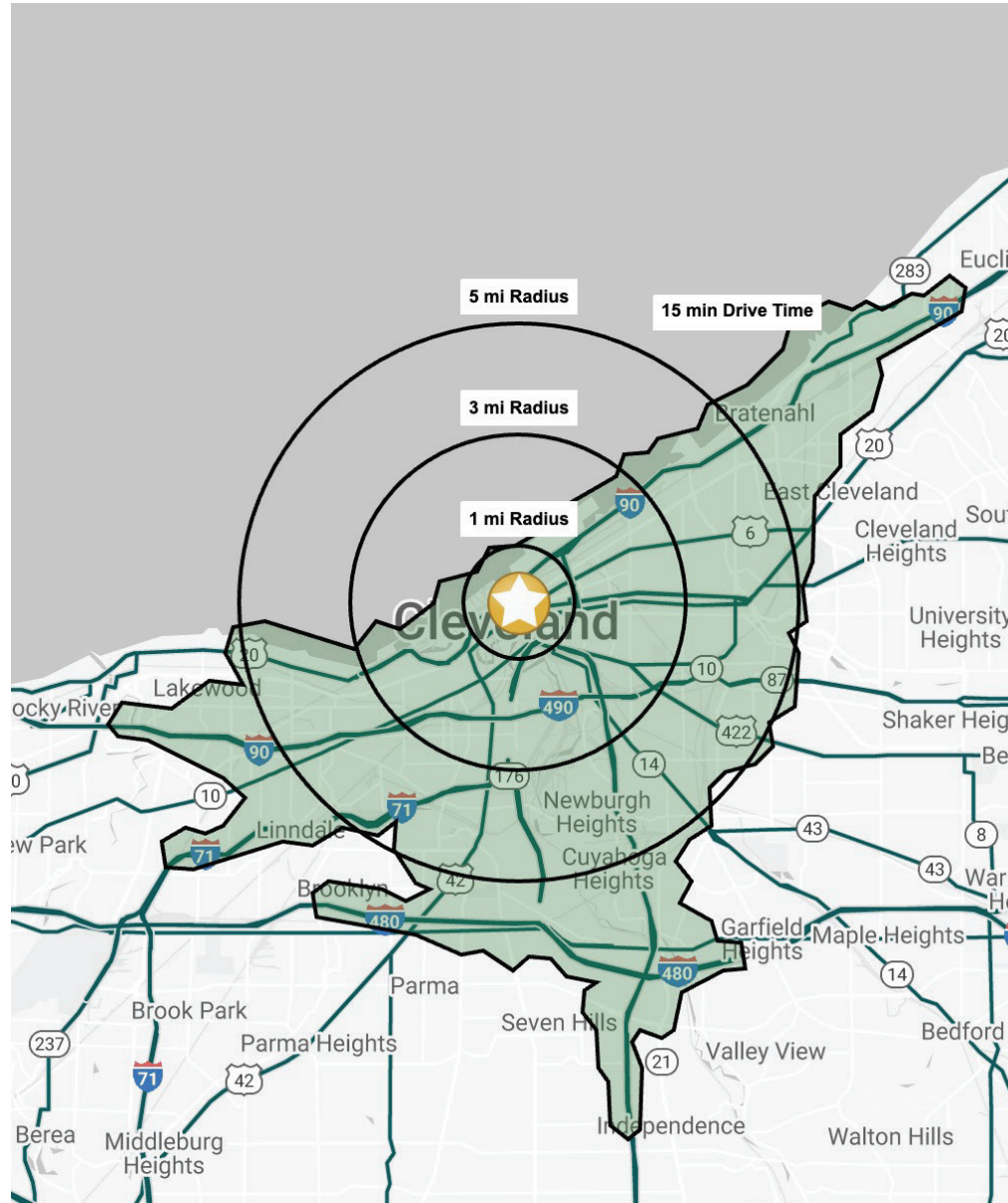
**VICTOR KIRALLAH** | 216.342.2626 | [vkirallah@anchorretail.com](mailto:vkirallah@anchorretail.com)



# FOR LEASE

# CATHEDRAL PLAZA

1405 E 9th Street | Cleveland, Ohio 44114



## DEMOGRAPHIC SNAPSHOT

	1 MILE	3 MILES	5 MILES	15 MIN DRIVE
POPULATION	2,615	51,903	160,809	192,596
HOUSEHOLDS	1,309	23,818	69,804	82,961
MEDIAN AGE	51.6	45.8	43.0	42.1
AVERAGE HH INCOME	\$68,528	\$85,325	\$76,654	\$73,146
MEDIAN HH INCOME	\$62,517	\$64,379	\$60,649	\$57,694
BUSINESSES	1,037	3,081	6,382	7,509
EMPLOYEES	13,501	35,058	81,509	99,001
EDUCATION: BACHELORS +	28.5%	32.9%	27.9%	25.8%



ALLISON GIOMUSO | 216.342.2620 | agiomuso@anchorretail.com  
 VICTOR KIRALLAH | 216.342.2626 | vkirallah@anchorretail.com

Cleveland • Columbus | [www.anchorretail.com](http://www.anchorretail.com)

The information submitted herein is not guaranteed. Although obtained from reliable resources, it is subject to errors, omissions, prior sale and withdrawal from the market without notice. Anchor Cleveland, LLC DBA Anchor Retail, and its agents, associates, and employees make no guarantee, warranty, or representation of the property. All images contained here in are the property of Anchor Cleveland, LLC DBA Anchor Retail, and shall not be duplicated or reproduced without express written consent of Anchor Cleveland, LLC DBA Anchor Retail. © 2023