



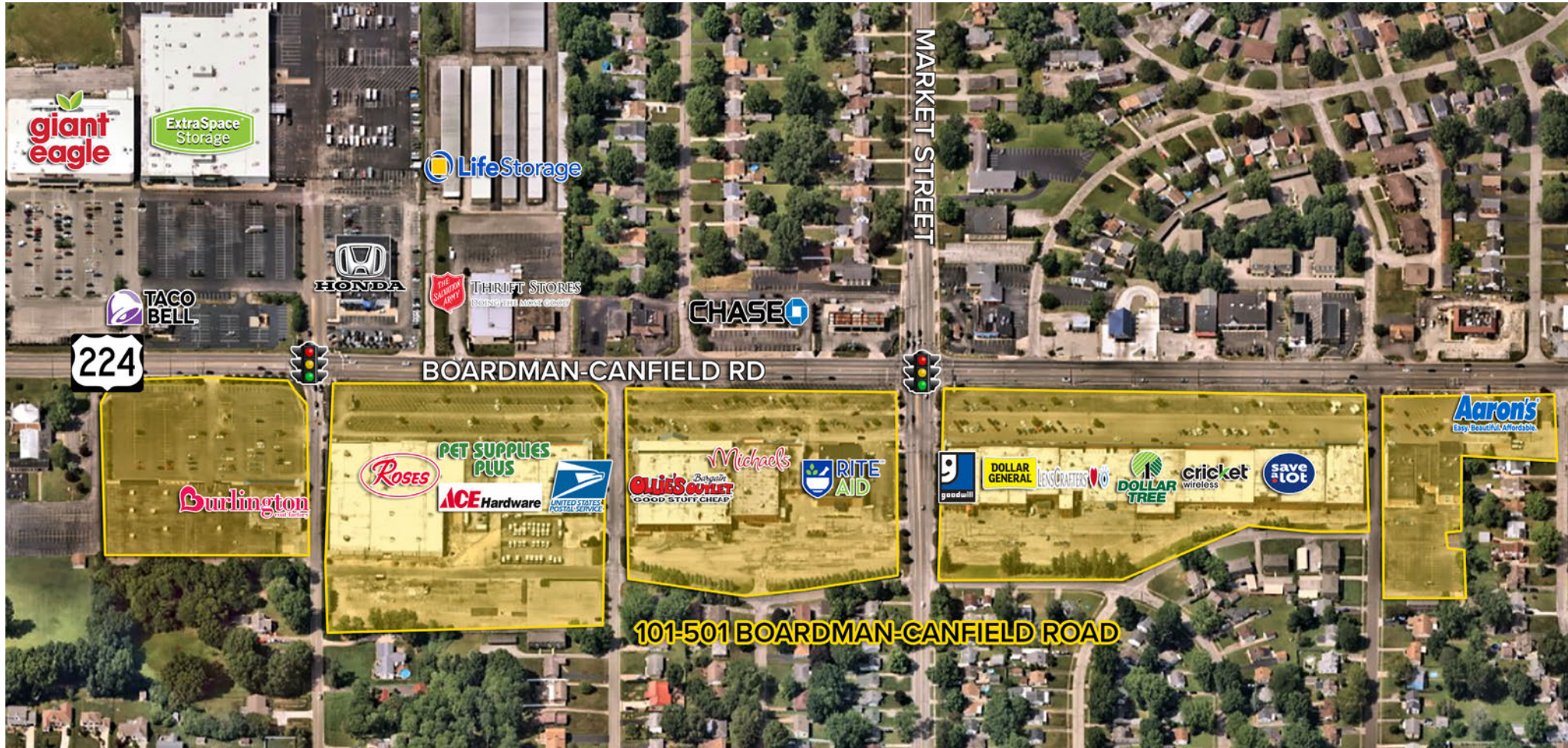
ANCHOR  
RETAIL

REALTY  
RESOURCES  
MEMBER



**BOARDMAN PLAZA**

101-501 Boardman-Canfield Road  
Boardman, Ohio 44512



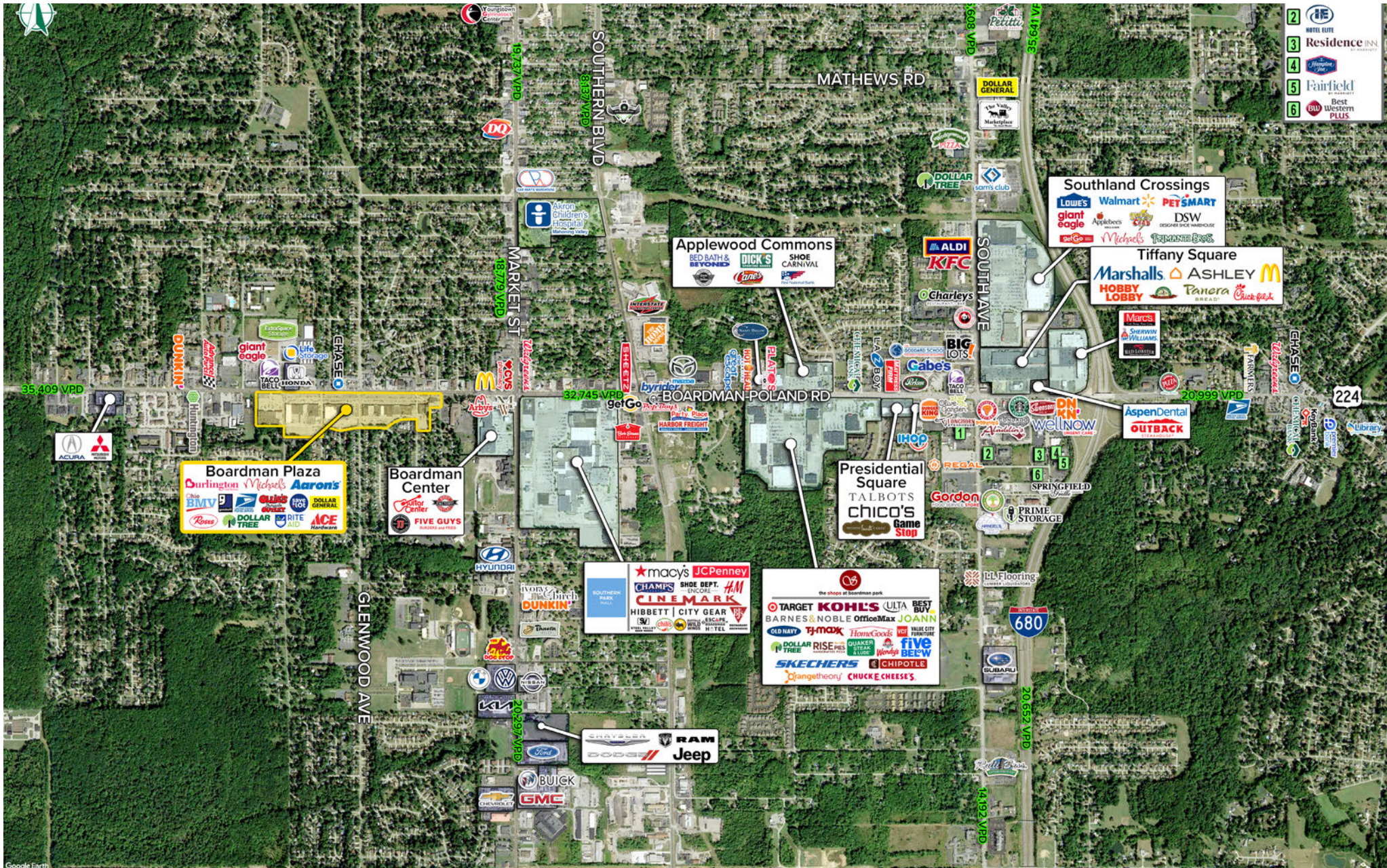
## HIGHLIGHTS

- ▶ Multiple inline spaces available for lease from 1,129 SF to 24,160 SF
- ▶ Retail pad available fronting Boardman-Canfield Road, up to 2.4 acres
- ▶ Well-established 430,028 SF shopping center anchored by Burlington Coat Factory, Michaels, Ollie's, Save A Lot, Dollar General, Dollar Tree, Ace Hardware, Roses, Aaron's, and Pet Supplies Plus
- ▶ Shopping center is set back 185' from Boardman-Canfield Road (US 224), offering excellent visibility
- ▶ Less than one (1) mile west from Southern Park Mall, anchored by H&M, JCPenney, Macy's, Macy's Backstage, and Planet Fitness
- ▶ [DRONE VIDEO](#)

# AVAILABLE FOR LEASE

# BOARDMAN PLAZA

101-501 Boardman-Canfield Rd | Boardman, Ohio 44512



**ANCHOR**  
RETAIL

**REALTY**  
**RESOURCES**  
MEMBER

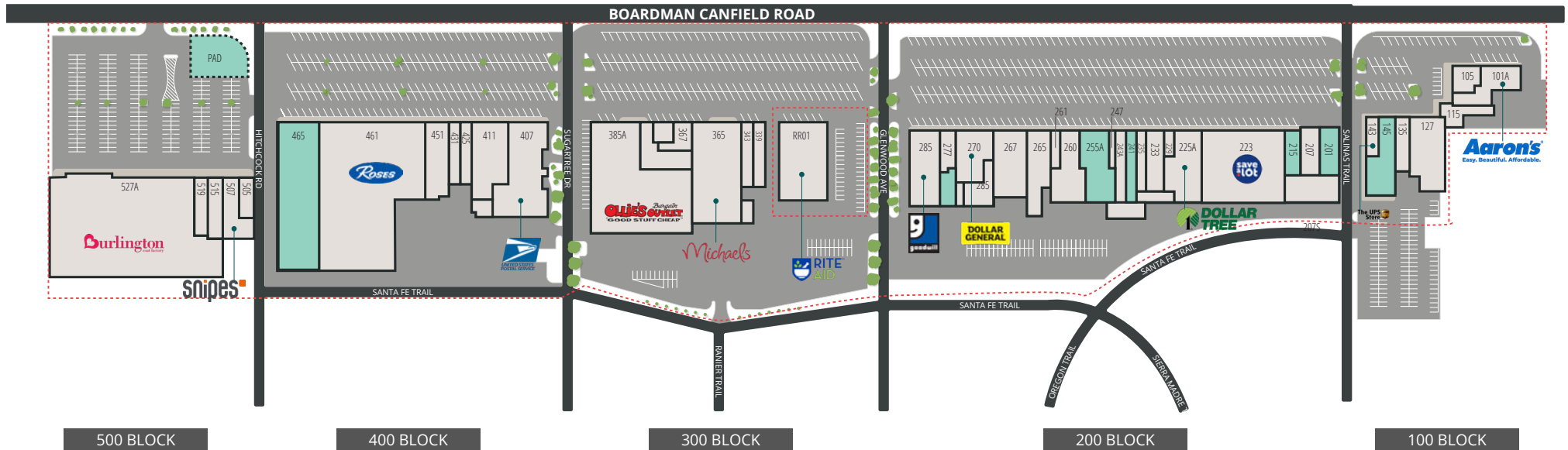
CHRIS MCFARLAND | 216.342.2578 | cmcfarland@anchorretail.com  
 MATT WILSON | 216.342.2580 | mwilson@anchorretail.com  
 JIMMY DIFONZO | 216.342.2634 | jdifonzo@anchorretail.com

# AVAILABLE FOR LEASE

# BOARDMAN PLAZA

101-501 Boardman-Canfield Rd | Boardman, Ohio 44512

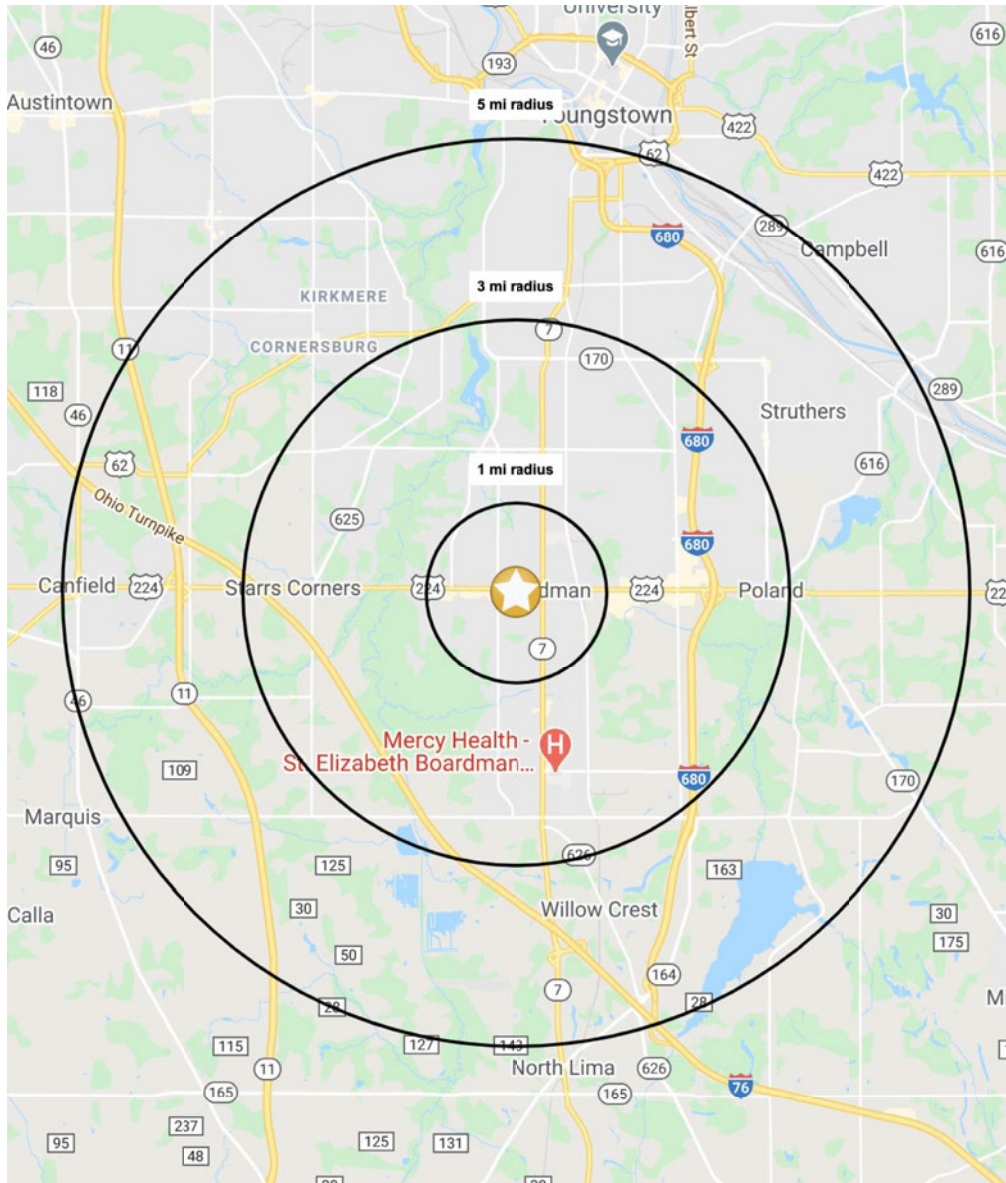
SUITE	TENANT	S.F.	SUITE	TENANT	S.F.	SUITE	TENANT	S.F.	SUITE	TENANT	S.F.
<b>100 BLOCK</b>			225A	Dollar Tree	11,069	278	AVAILABLE RETAIL	1,129	451	Ace Hardware	10,134
101A	Aaron's Rentals	7,174	229	Cricket Wireless	1,467	285	Goodwill	12,053	461	Roses	55,948
105	Uptown Cheapskate	4,309	233	State of Ohio Bureau of Motor Vehicles	4,375	<b>300 BLOCK</b>			465	AVAILABLE RETAIL	24,160
115	HER	1,369	235	Plaza Book & Smoke	2,829	385A	Ollie's	36,232	<b>500 BLOCK</b>		
127	Mahoning & Columbiana Training	9,330	241	AVAILABLE RETAIL	5,750	339	The Exchange	3,600	505	TT Nail & Spa	1,118
135	House of China	3,000	243A	That's a Wrap	6,250	343	Sunny Foot Spa	3,055	507	Snipes	5,995
143	UPS Store	1,671	247	Island Tropic	1,575	365	Michaels	20,000	515	Armed Forces Recruiting	2,760
145	AVAILABLE RETAIL	7,064	255A	AVAILABLE RETAIL	10,260	367	2000 Nails	2,060	519	Armed Forces Recruiting	2,536
<b>200 BLOCK</b>			260	Physicians Dialysis Center	7,213	371	Famous Hair Salon	921	527A	Burlington	67,000
201	AVAILABLE RETAIL	3,150	261	Management Office	901	<b>400 BLOCK</b>			LL01	Lucky Lotto	300
207	Rondinelli Tuxedo Company	3,300	265	LensCrafters	7,920	407	US Postal Service	14,409	PAD	AVAILABLE RETAIL PAD	N/A
207S	Tuxedo 2000/Dutchess Cleaners	4,924	267	Royal Buffet	9,660	411	Pet Supplies Plus	10,641	RR01	Rite Aid (not included)	N/A
215	AVAILABLE RETAIL	2,100	270	Dollar General	8,075	425	Buttermaid Bakery	1,992	<b>TOTAL</b>		<b>430,028</b>
223	Save A Lot	22,500	277	Keystone Rehabilitation	3,000	431	Card Smart	3,750			



# AVAILABLE FOR LEASE

# BOARDMAN PLAZA

101-501 Boardman-Canfield Rd | Boardman, Ohio 44312



## DEMOGRAPHIC SNAPSHOT

	1 MILE	3 MILES	5 MILES	15 MIN DRIVE
POPULATION	7,070	48,948	111,041	134,260
HOUSEHOLDS	3,316	22,095	49,006	58,406
MEDIAN AGE	42.2	42.7	43.0	42.3
AVERAGE HH INCOME	\$75,722	\$74,325	\$73,010	\$71,451
MEDIAN HH INCOME	\$61,480	\$59,152	\$57,666	\$56,127
BUSINESSES	668	2,660	4,254	5,315
EMPLOYEES	7,713	30,748	46,547	62,166
EDUCATION: BACHELORS +	33.5%	33.5%	29.9%	28.6%



CHRIS MCFARLAND | 216.342.2578 | cmcfarland@anchorretail.com

MATT WILSON | 216.342.2580 | mwilson@anchorretail.com

JIMMY DIFONZO | 216.342.2634 | jdifonzo@anchorretail.com

Cleveland • Columbus | [www.anchorretail.com](http://www.anchorretail.com)