



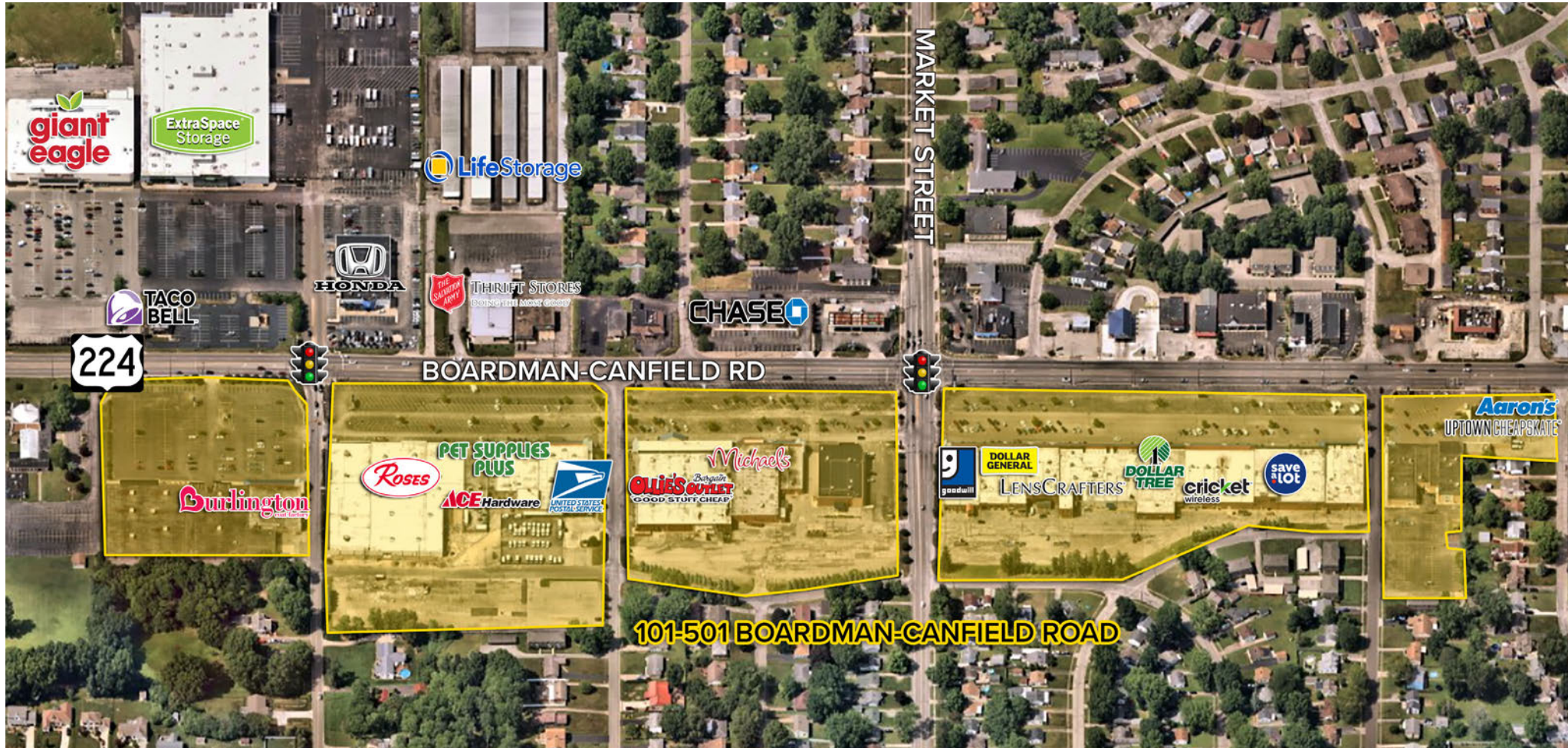
ANCHOR
RETAIL

REALTY
RESOURCES
MEMBER



BOARDMAN PLAZA

101-501 Boardman-Canfield Road
Boardman, Ohio 44512



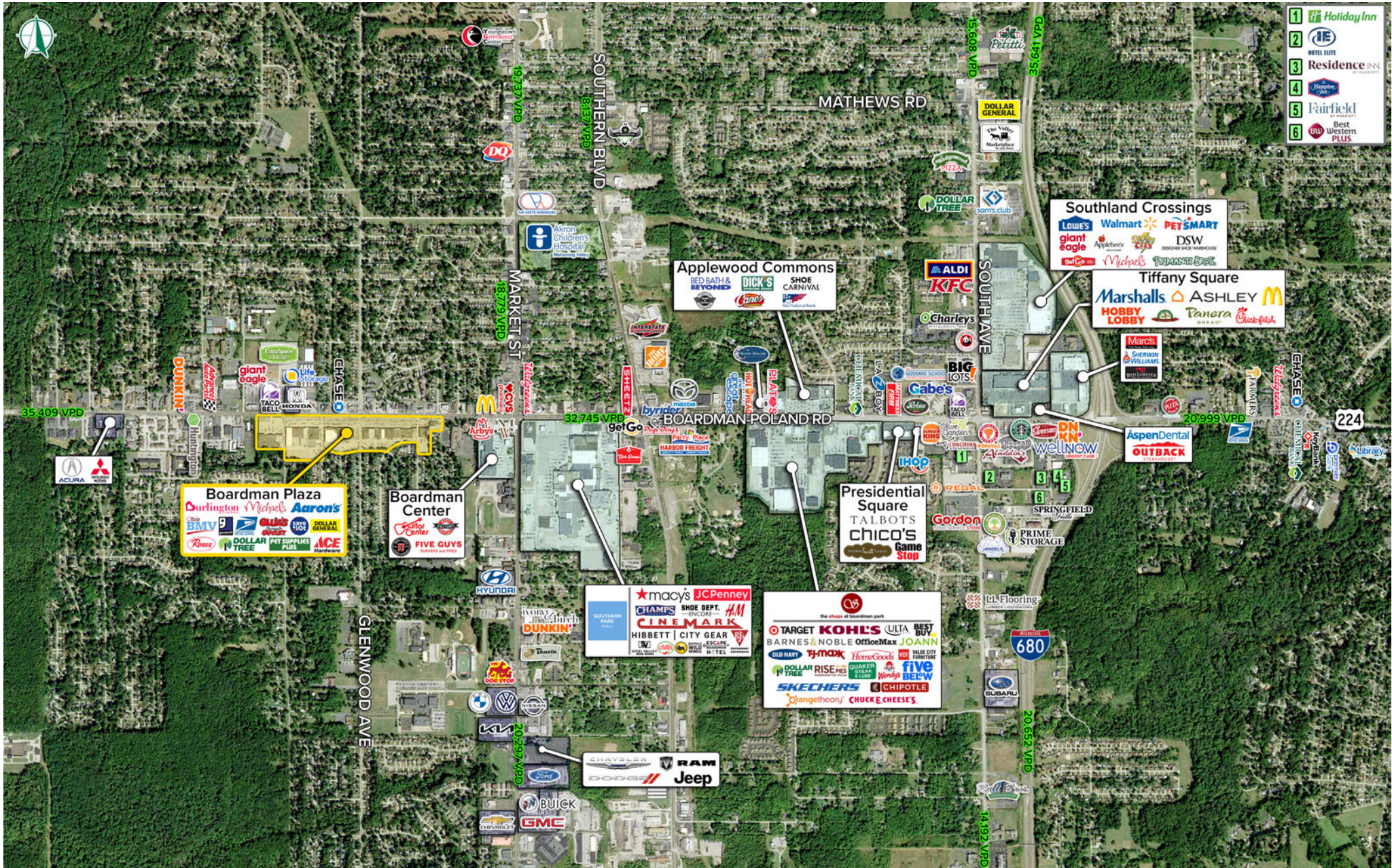
HIGHLIGHTS

- ▶ Multiple inline spaces available for lease from 1,129 SF to 24,160 SF
- ▶ Retail pad available fronting Boardman-Canfield Road, up to 2.4 acres
- ▶ Well-established 430,028 SF shopping center anchored by Burlington Coat Factory, Michaels, Ollie's, Save A Lot, Dollar General, Dollar Tree, Ace Hardware, Roses, Aaron's, and Pet Supplies Plus
- ▶ Shopping center is set back 185' from Boardman-Canfield Road (US 224), offering excellent visibility
- ▶ Less than one (1) mile west from Southern Park Mall, anchored by H&M, JCPenney, Macy's, Macy's Backstage, and Planet Fitness
- ▶ [DRONE VIDEO](#)

AVAILABLE FOR LEASE

BOARDMAN PLAZA

101-501 Boardman-Canfield Rd | Boardman, Ohio 44512

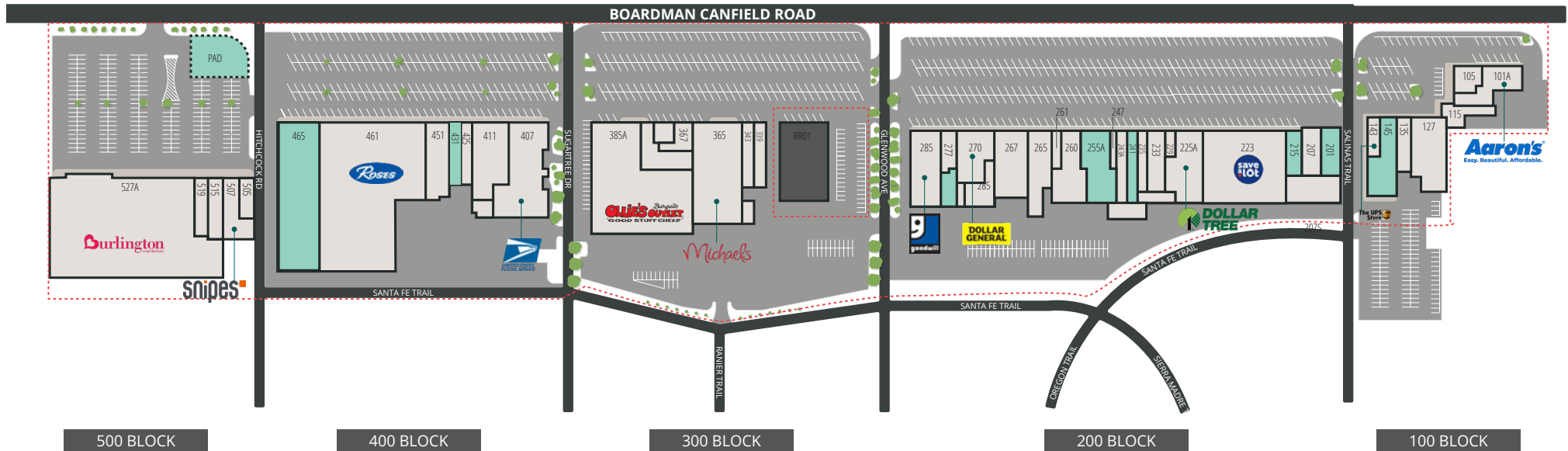


AVAILABLE FOR LEASE

BOARDMAN PLAZA

101-501 Boardman-Canfield Rd | Boardman, Ohio 44512

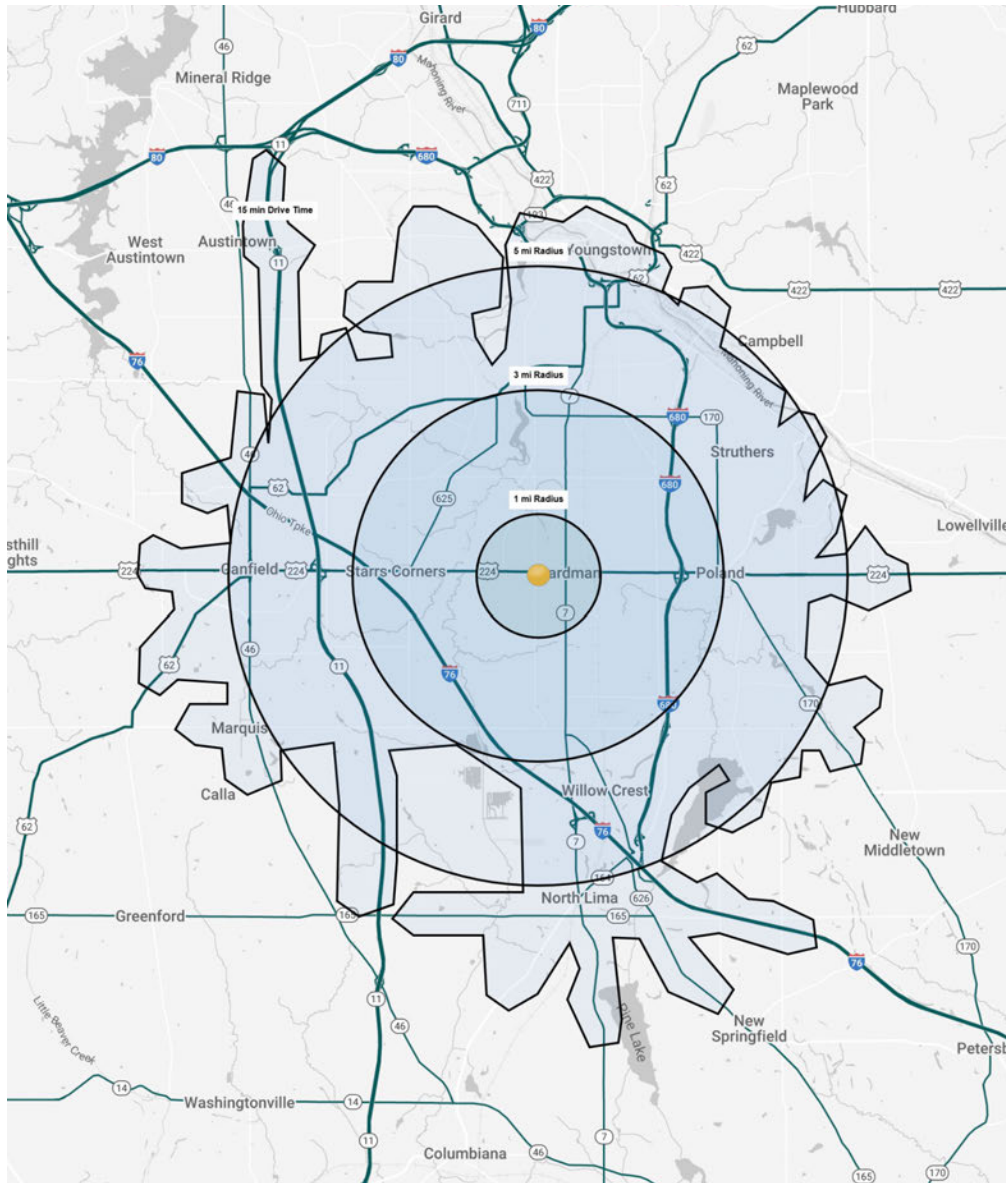
SUITE	TENANT	S.F.	SUITE	TENANT	S.F.	SUITE	TENANT	S.F.	SUITE	TENANT	S.F.	
100 BLOCK			225A	Dollar Tree	11,069	278	AVAILABLE RETAIL	1,129	451	Ace Hardware	10,134	
101A	Aaron's Rentals	7,174	229	Cricket Wireless	1,467	285	Goodwill	12,053	461	Roses	55,948	
105	Uptown Cheapskate	4,309	233	State of Ohio Bureau of Motor Vehicles	4,375	300 BLOCK			465	AVAILABLE RETAIL	24,160	
115	HER	1,369	235	Plaza Book & Smoke	2,829	385A	Ollie's	36,232	500 BLOCK			
127	Mahoning & Columbiana Training	9,330	241	AVAILABLE RETAIL	5,750	339	The Exchange	3,600	505	TT Nail & Spa	1,118	
135	House of China	3,000	243A	That's a Wrap	6,250	343	Sunny Foot Spa	3,055	507	Snipes	5,995	
143	UPS Store	1,671	247	Island Tropic	1,575	365	Michaels	20,000	515	Armed Forces Recruiting	2,760	
145	AVAILABLE RETAIL	7,064	255A	AVAILABLE RETAIL	10,260	367	2000 Nails	2,060	519	Armed Forces Recruiting	2,536	
200 BLOCK			260	Physicians Dialysis Center	7,213	371	Famous Hair Salon	921	527A	Burlington	67,000	
201	AVAILABLE RETAIL	3,150	261	Management Office	901	400 BLOCK			LL01	Lucky Lotto	300	
207	Rondinelli Tuxedo Company	3,300	265	LensCrafters	7,920	407	US Postal Service	14,409	PAD	AVAILABLE RETAIL PAD	N/A	
207S	Tuxedo 2000/Dutchess Cleaners	4,924	267	Royal Buffet	9,660	411	Pet Supplies Plus	10,641	RR01	Former Rite Aid (not included)	N/A	
215	AVAILABLE RETAIL	2,100	270	Dollar General	8,075	425	Buttermaid Bakery	1,992	TOTAL			430,028
223	Save A Lot	22,500	277	Keystone Rehabilitation	3,000	431	AVAILABLE RETAIL	3,750				



AVAILABLE FOR LEASE

BOARDMAN PLAZA

101-501 Boardman-Canfield Rd | Boardman, Ohio 44312



DEMOGRAPHIC SNAPSHOT

	1 MILE	3 MILES	5 MILES	15 MIN DRIVE
POPULATION	7,680	47,937	112,285	129,566
HOUSEHOLDS	3,581	21,634	49,758	57,231
MEDIAN AGE	42.6	43.3	43.3	43.0
AVERAGE HH INCOME	\$87,547	\$90,144	\$86,168	\$83,267
MEDIAN HH INCOME	\$67,922	\$68,152	\$65,689	\$63,434
BUSINESSES	668	2,627	4,379	5,377
EMPLOYEES	6,238	25,243	41,334	53,964
EDUCATION: BACHELORS +	33.4%	35.5%	31.2%	29.9%



CHRIS MCFARLAND | 216.342.2578 | cmcfarland@anchorretail.com

MATT WILSON | 216.342.2580 | mwilson@anchorretail.com

JIMMY DIFONZO | 216.342.2634 | jdifonzo@anchorretail.com

Cleveland • Columbus | www.anchorretail.com